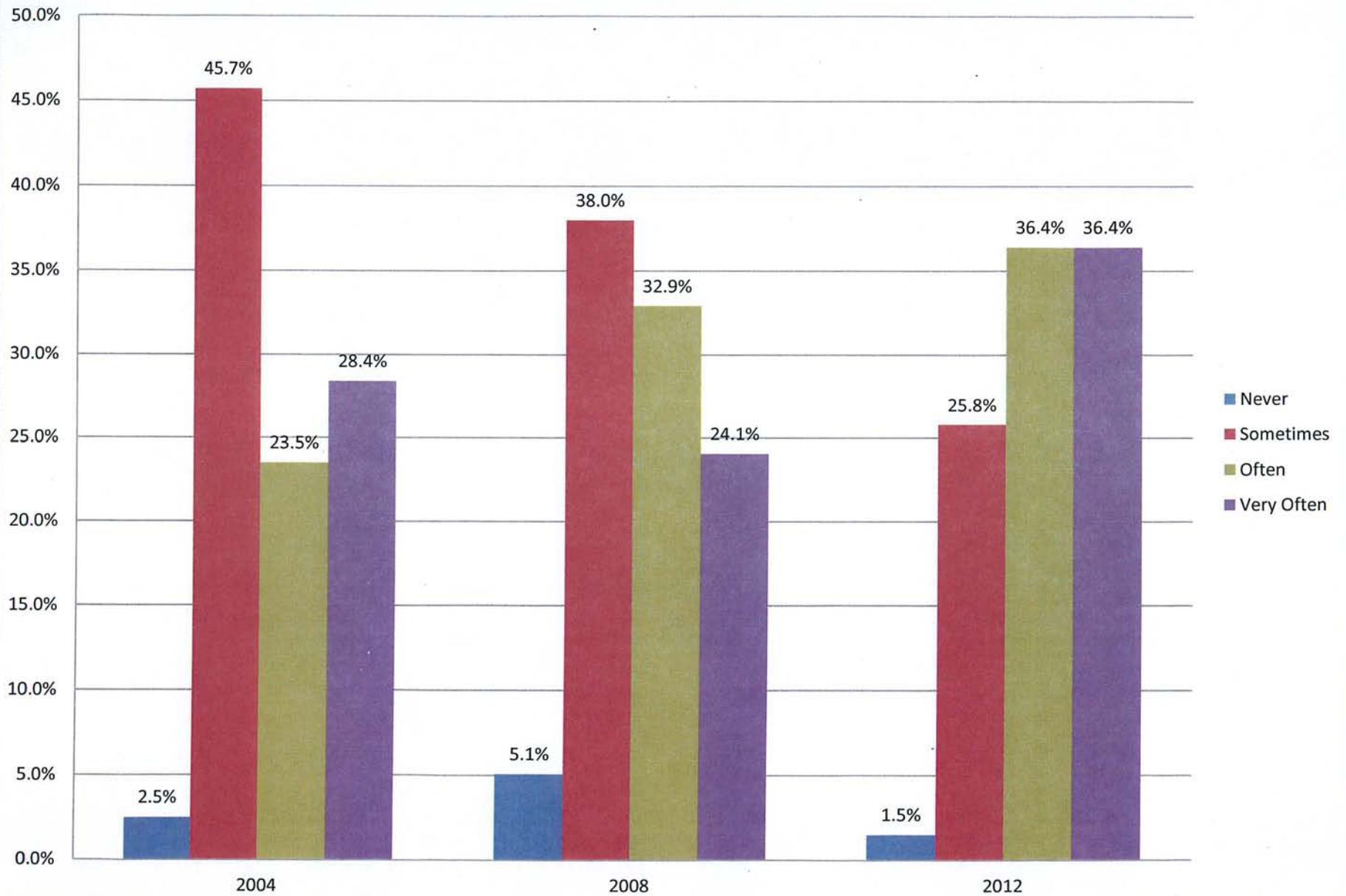
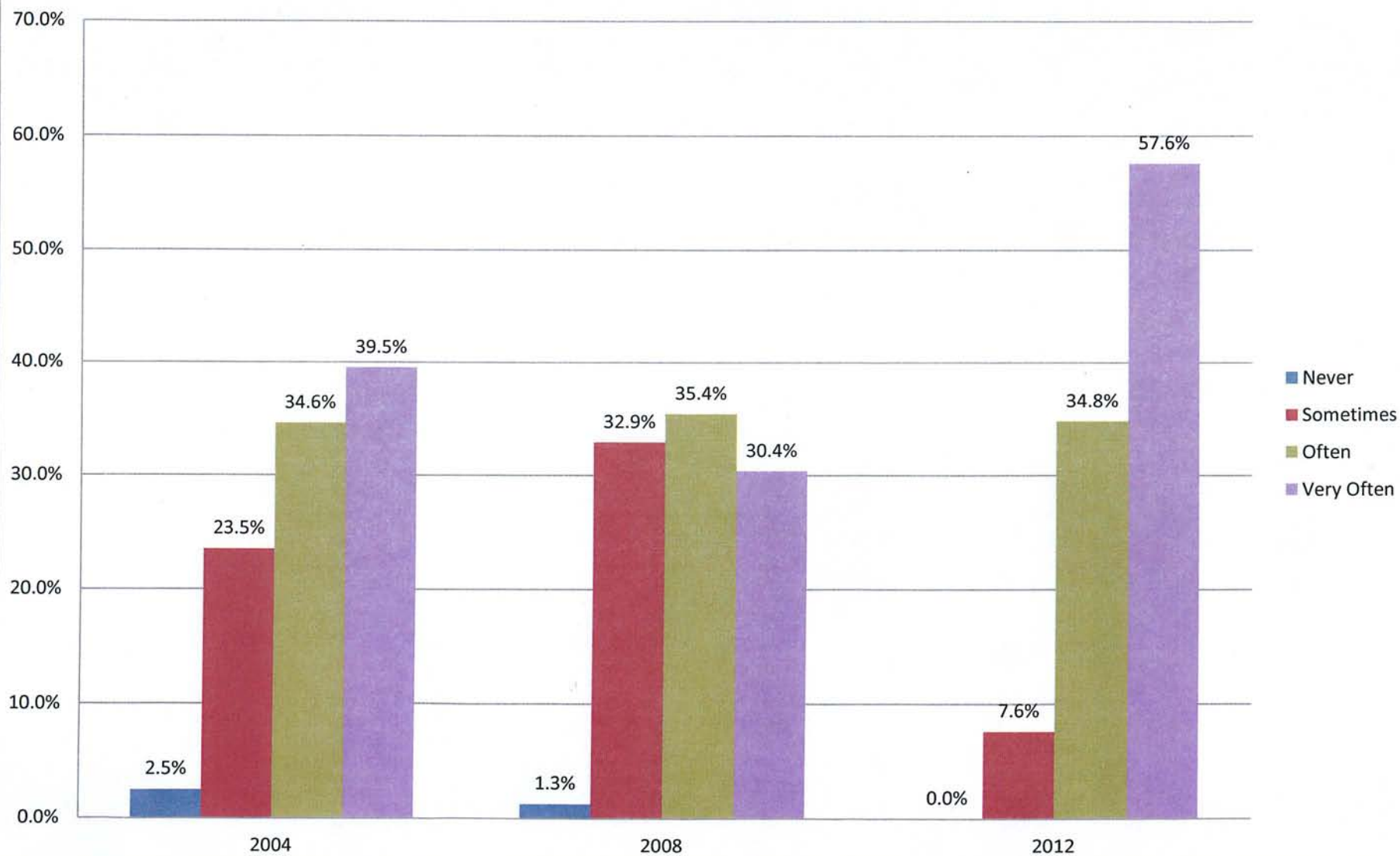


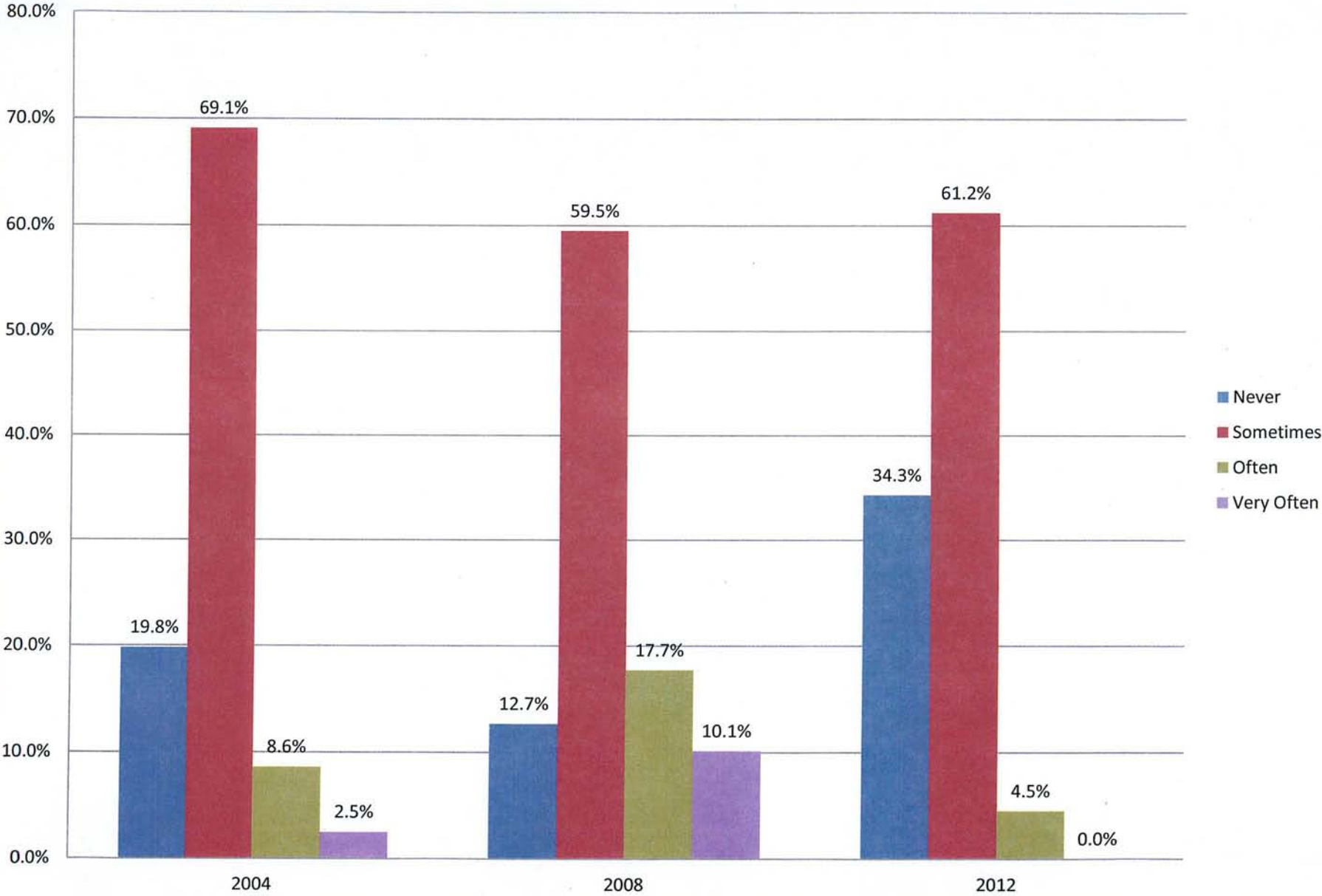
### 3L - Asked questions in class or contributed to class discussions



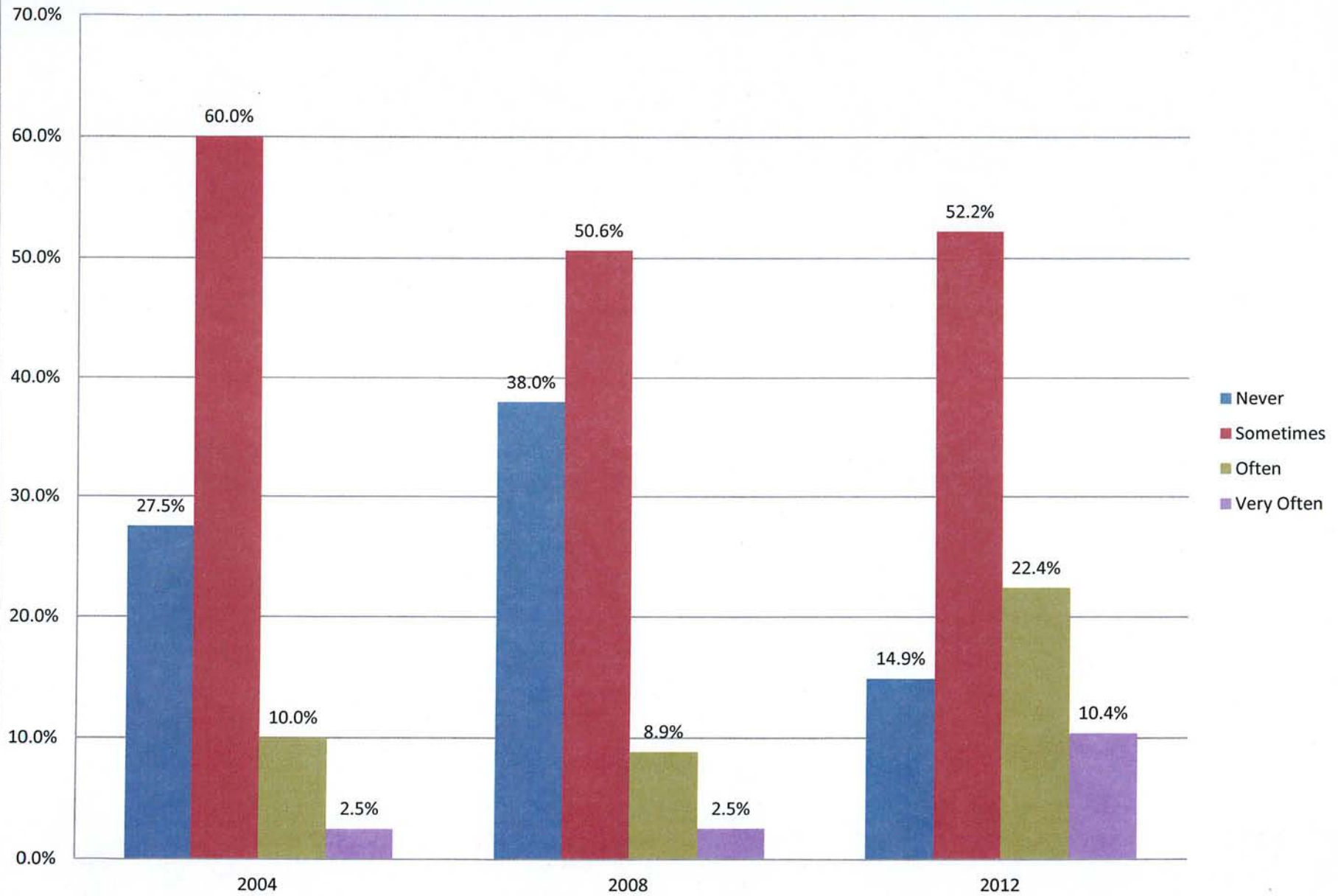
### 3L - Worked on a paper or project that required integrating ideas or information from various sources



### 3L - Come to class without completing readings or assignments

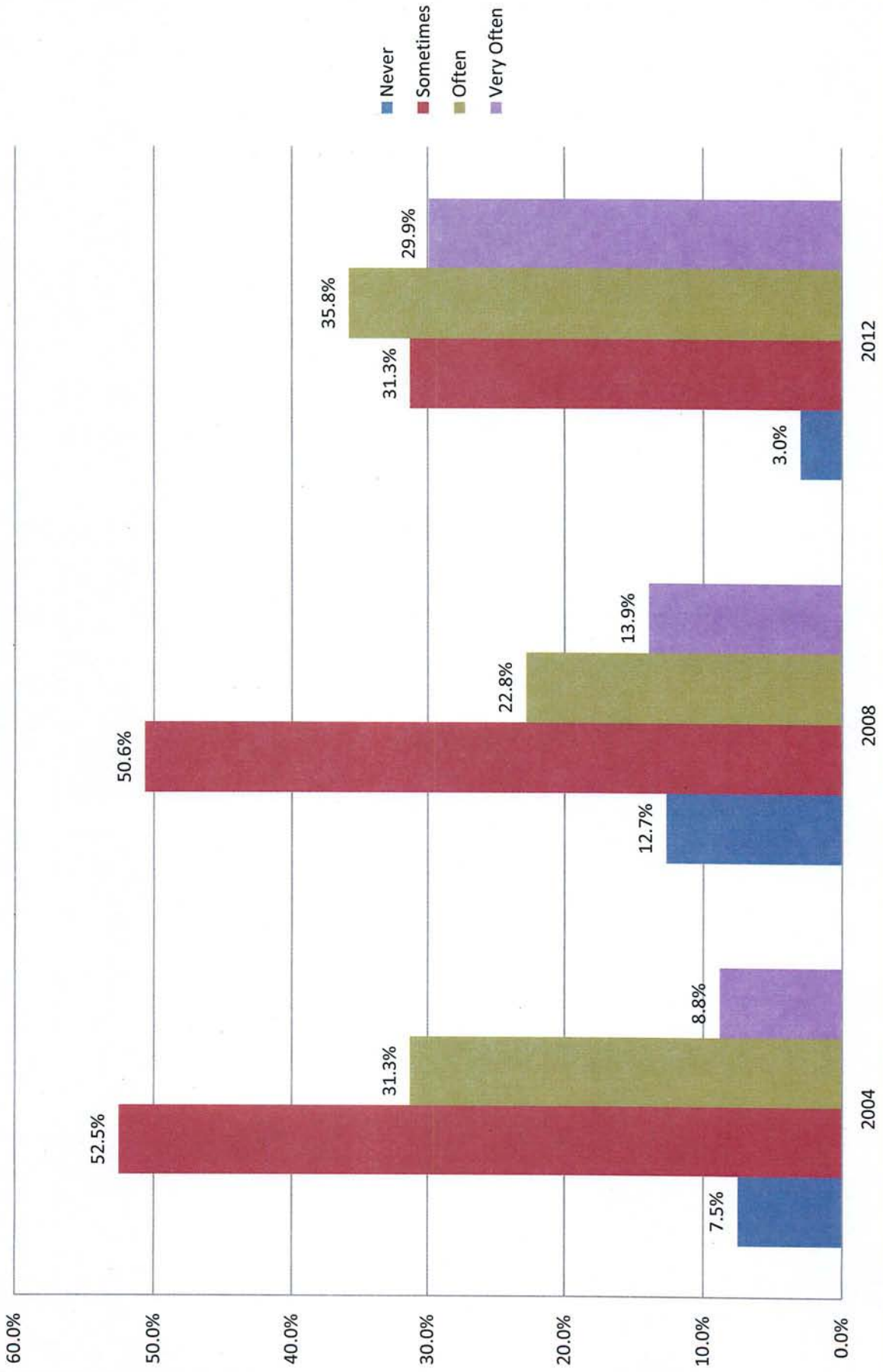


### 3L - Worked with other students on project during class

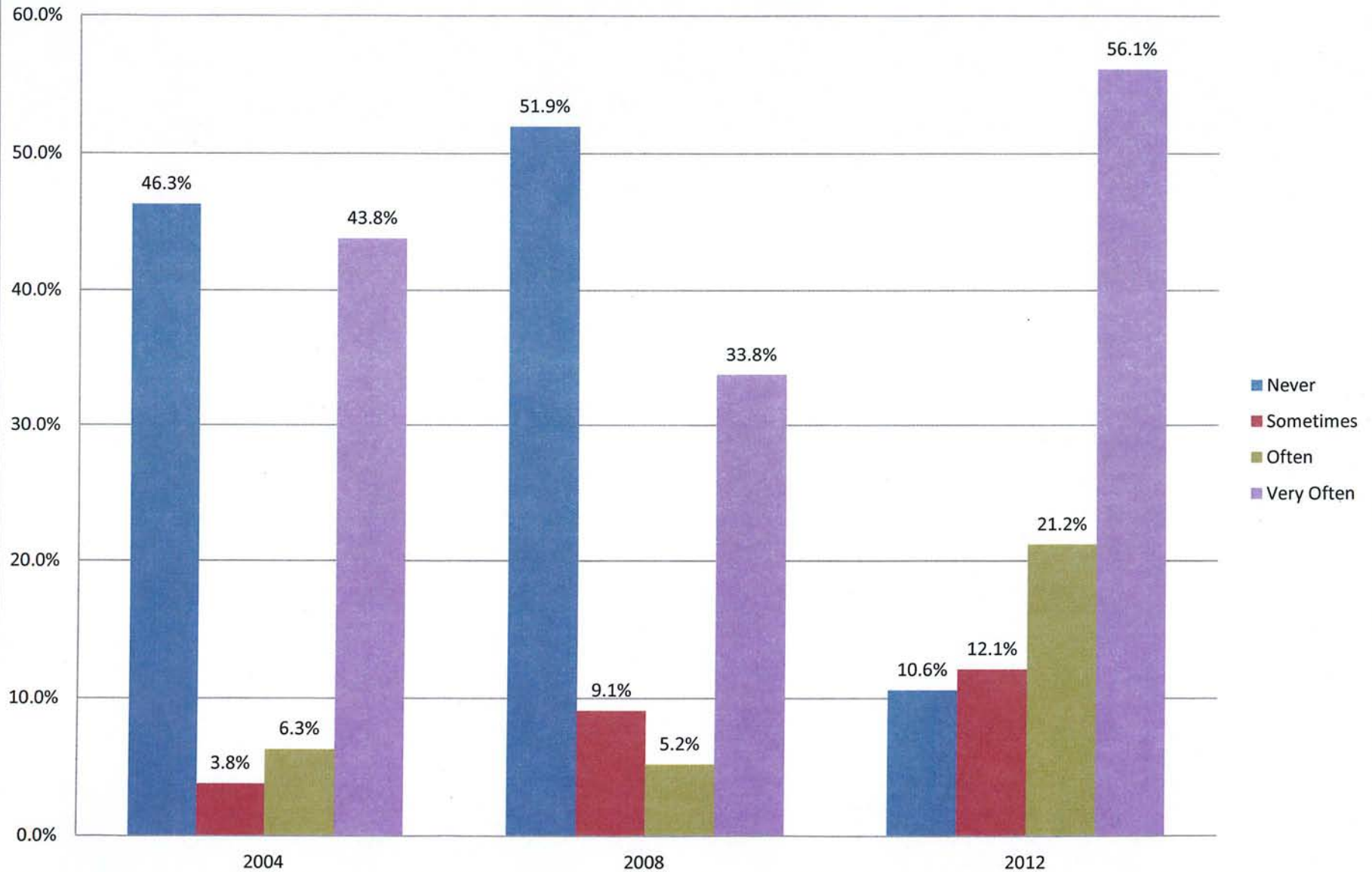




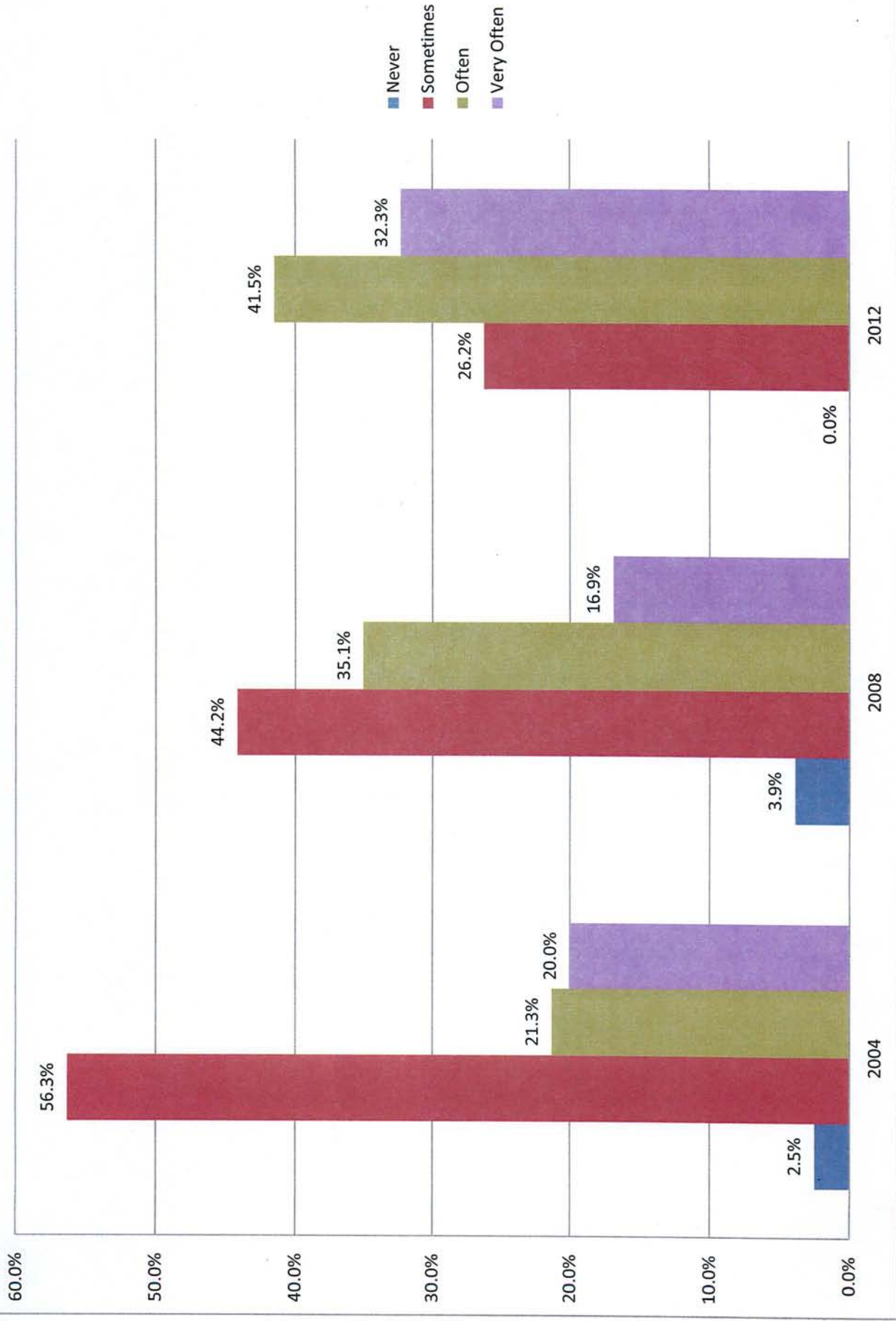
### 3L - Worked with classmates outside of class to prepare class assignments



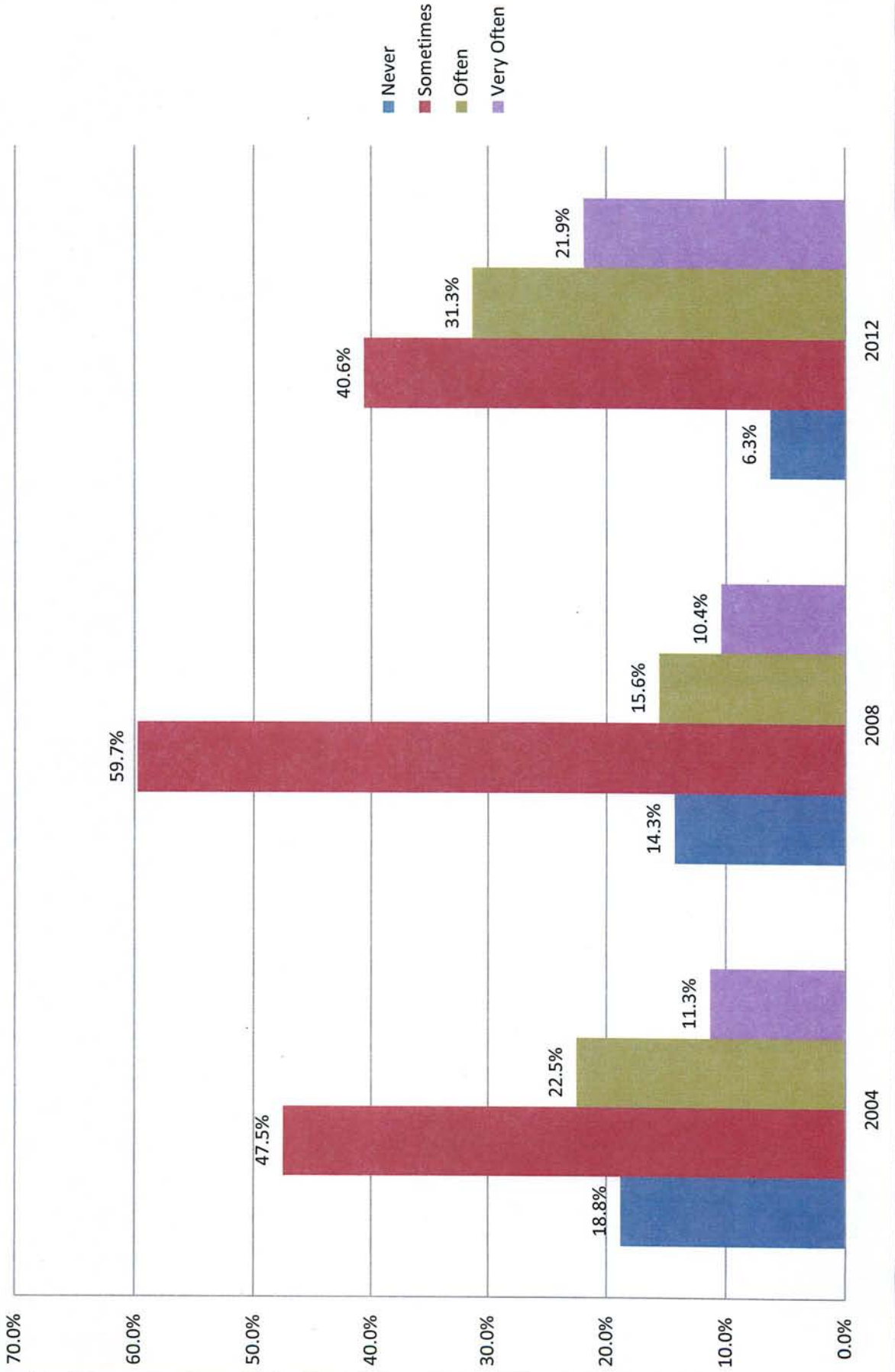
### 3L - Participated in a clinical or pro bono project as part of a course or for academic credit



### 3L - Discussed assignments with a faculty member

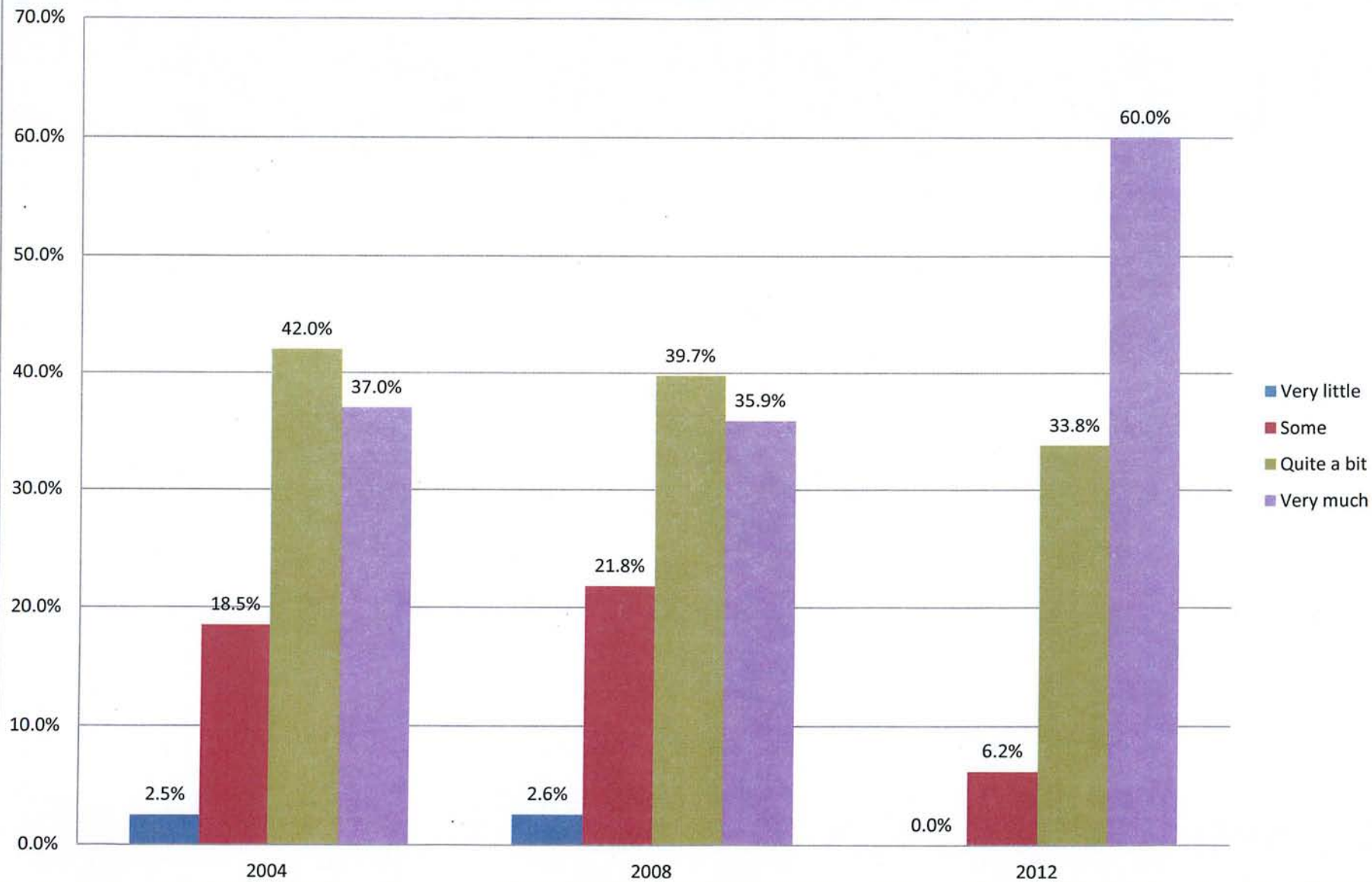


### 3L - Talked about career plans or job search activities with a faculty member or advisor

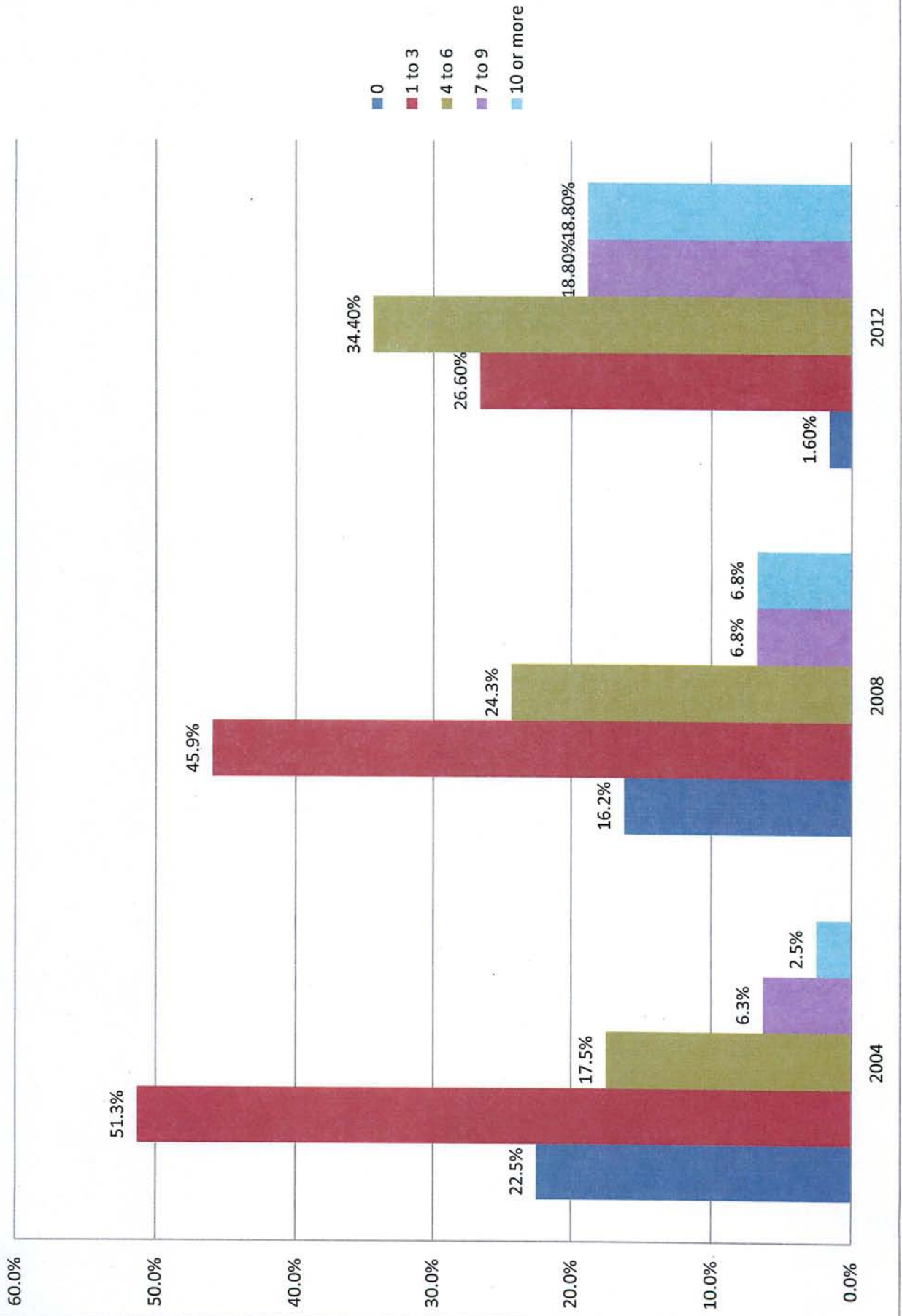




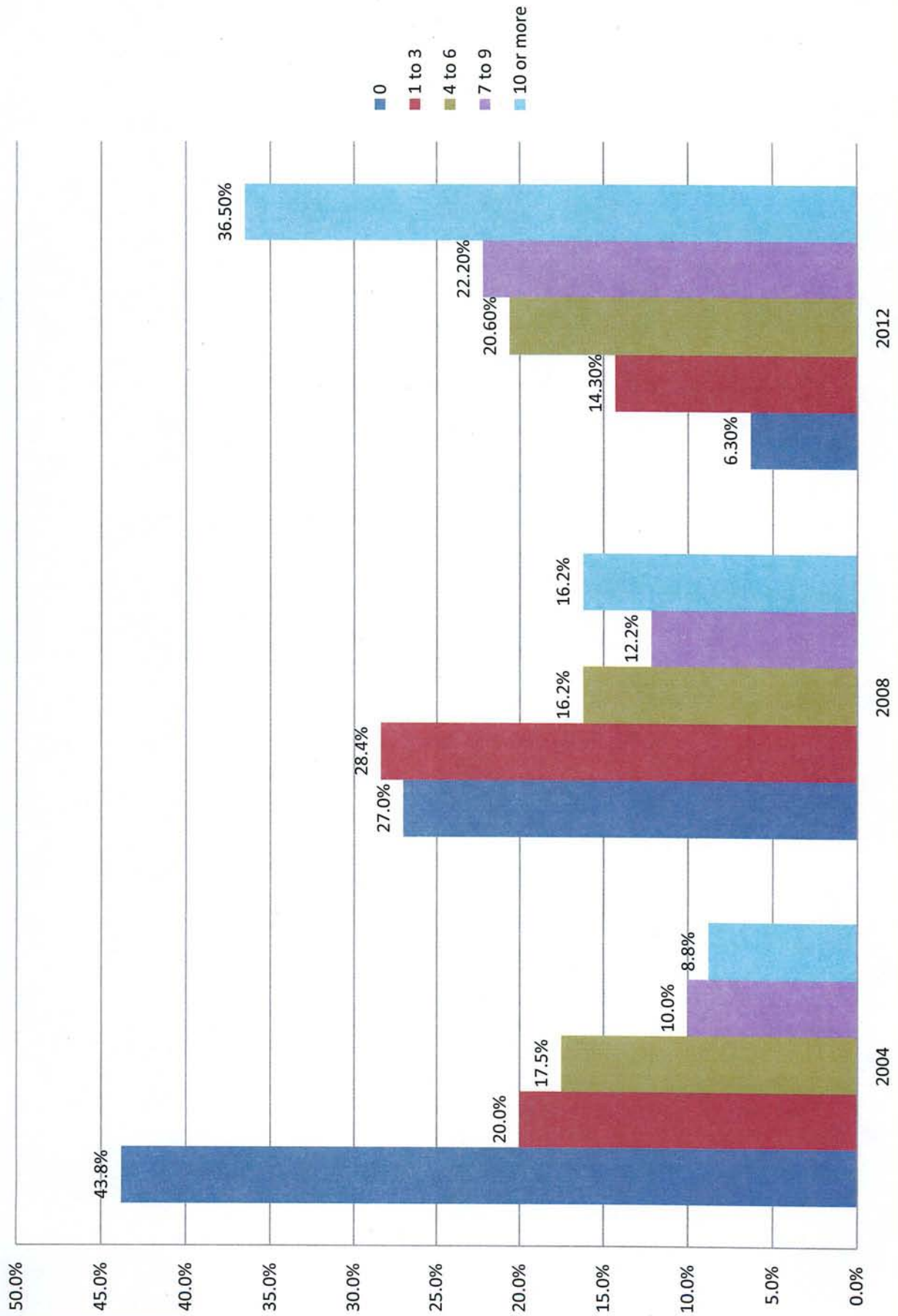
### 3L - Applying theories or concepts to practical problems or in new situations



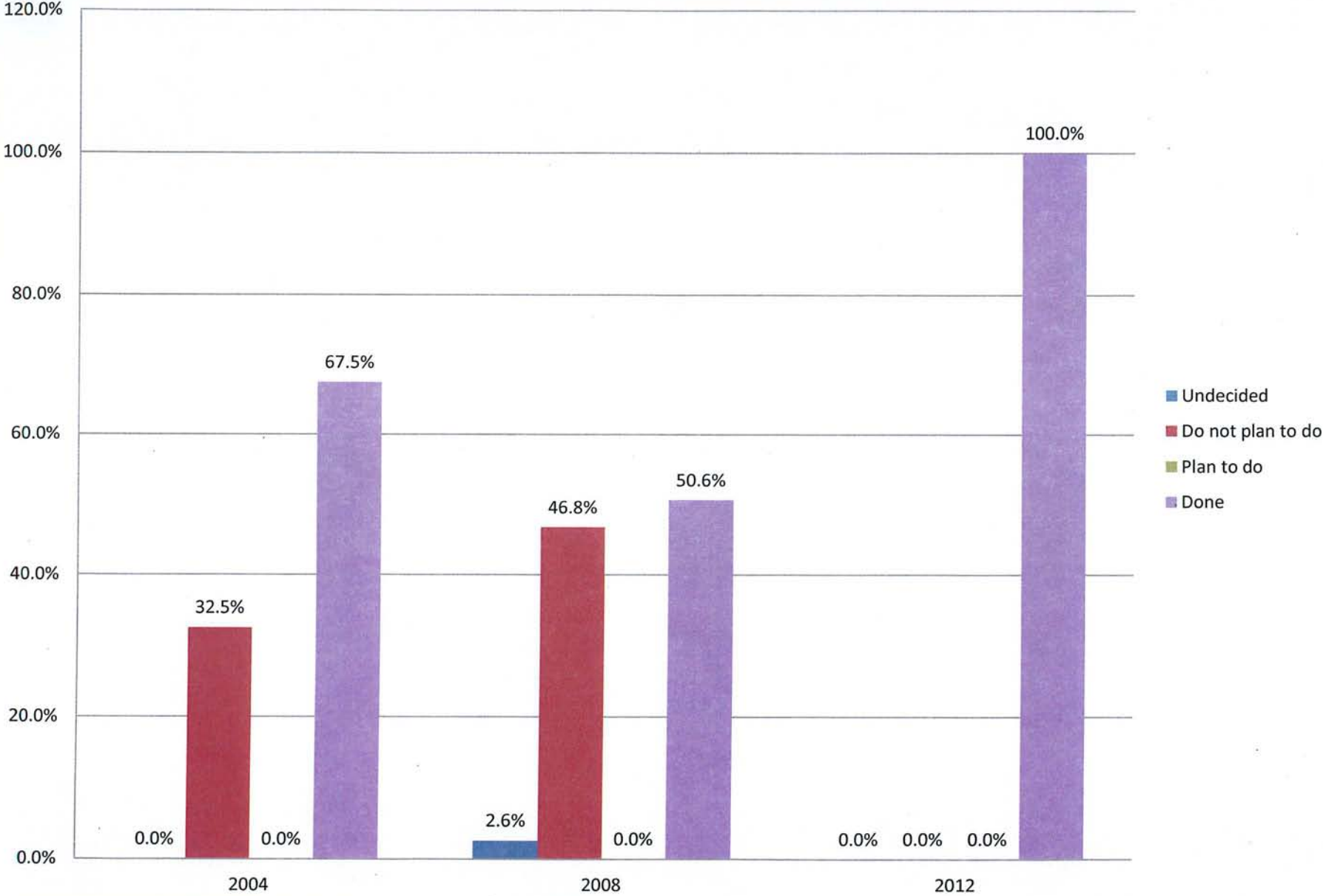
### 3L - Number of written papers between 5 and 19 pages



### 3L - Number of written papers of fewer than 5 pages

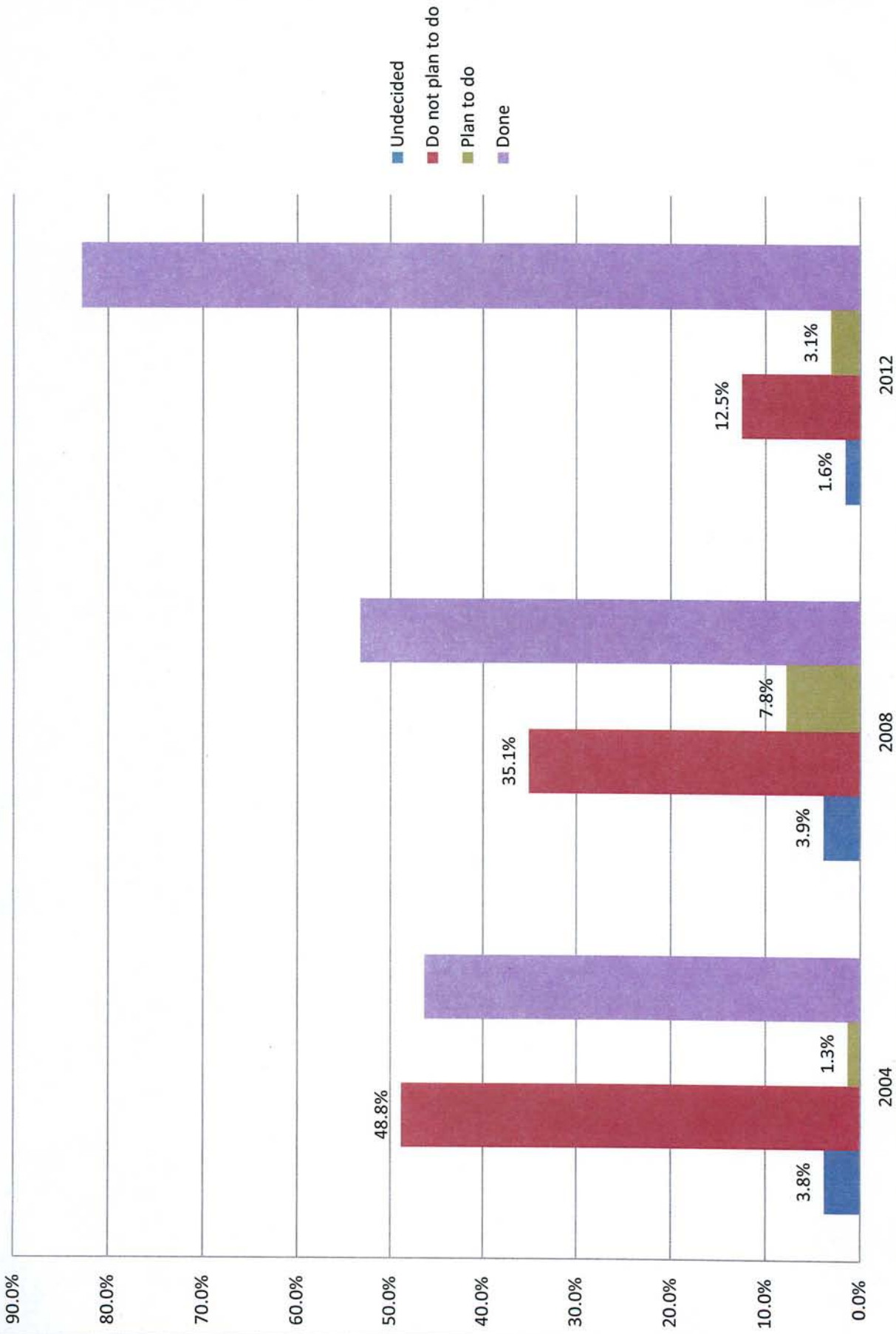


### 3L - Clinical internship or field experience

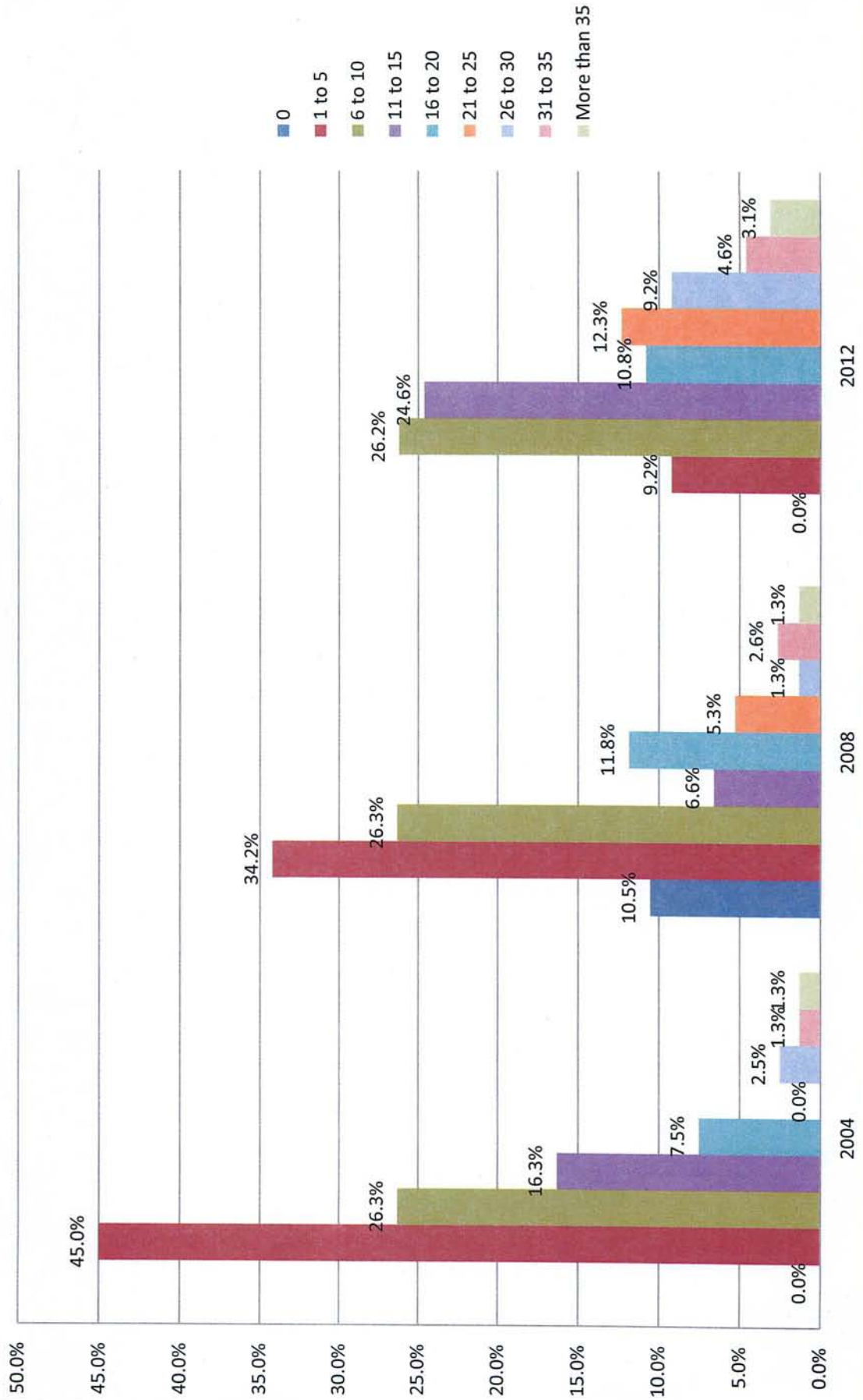




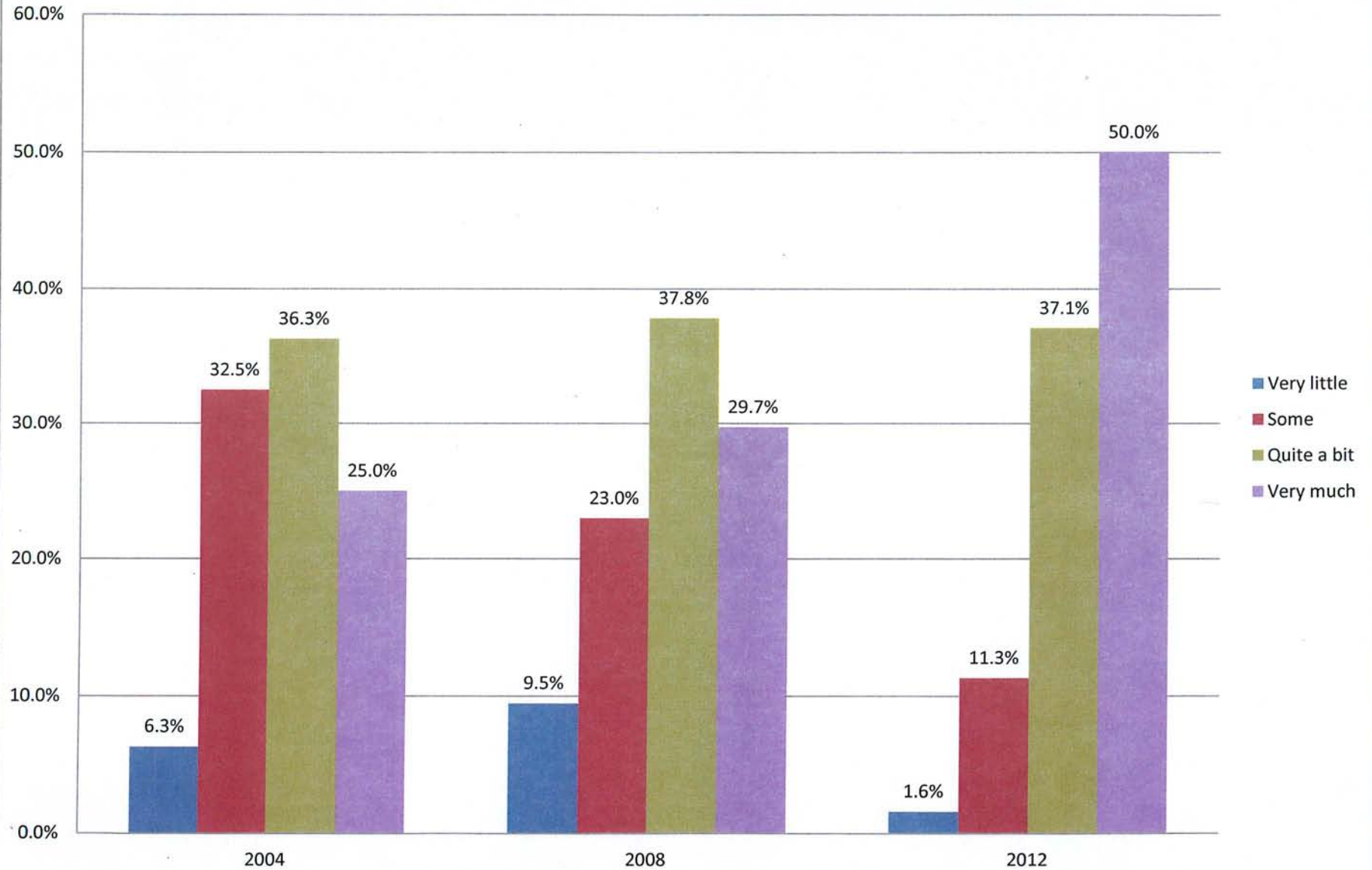
### 3L - Volunteer or pro bono work



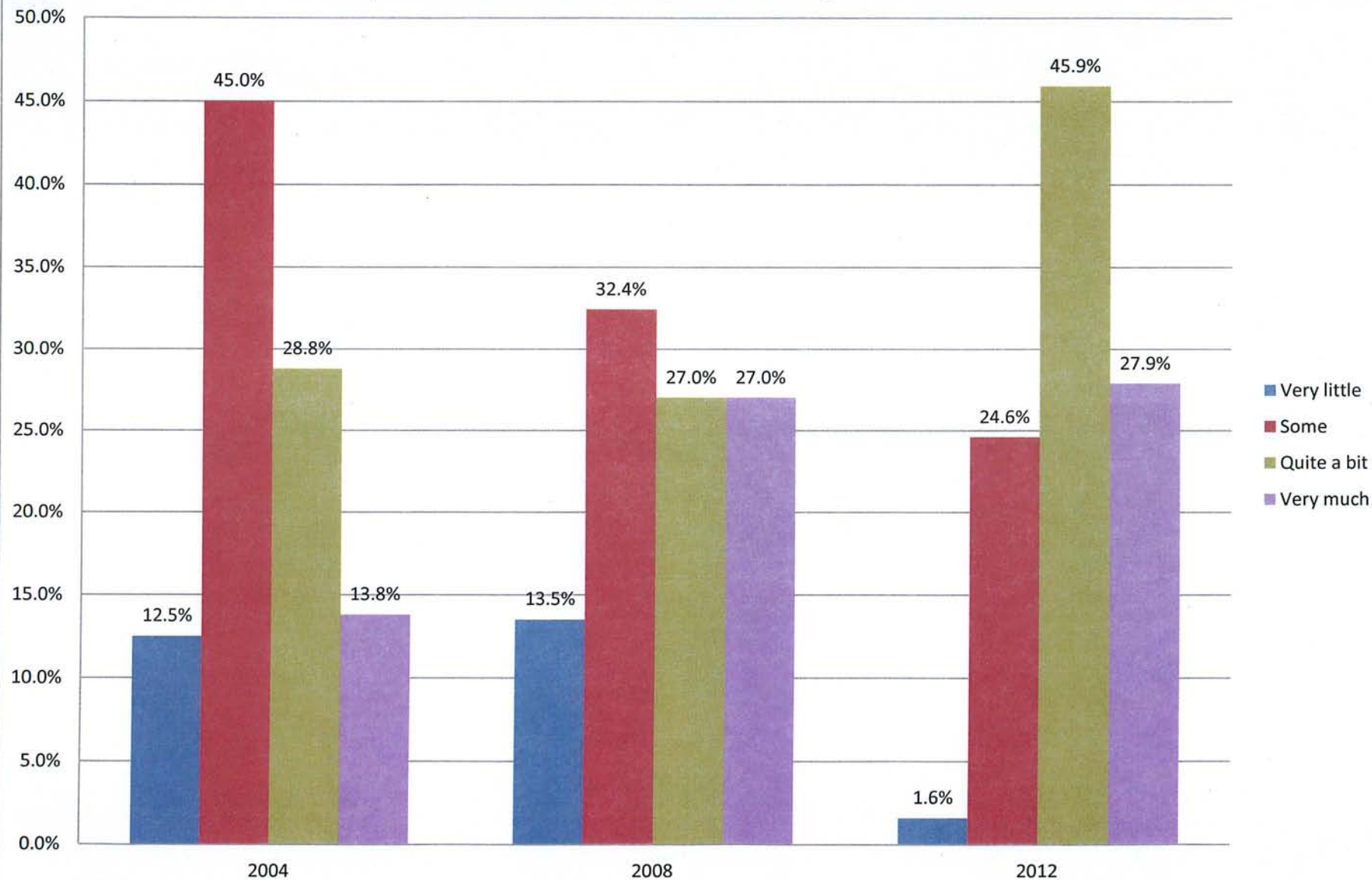
### 3L - Hours per week spent preparing for class and clinical courses other than reading (studying, writing, doing homework, trial preparation, and other academic activities)



### 3L - To what extent has your experience at law school contributed to acquiring job or work-related knowledge and skills

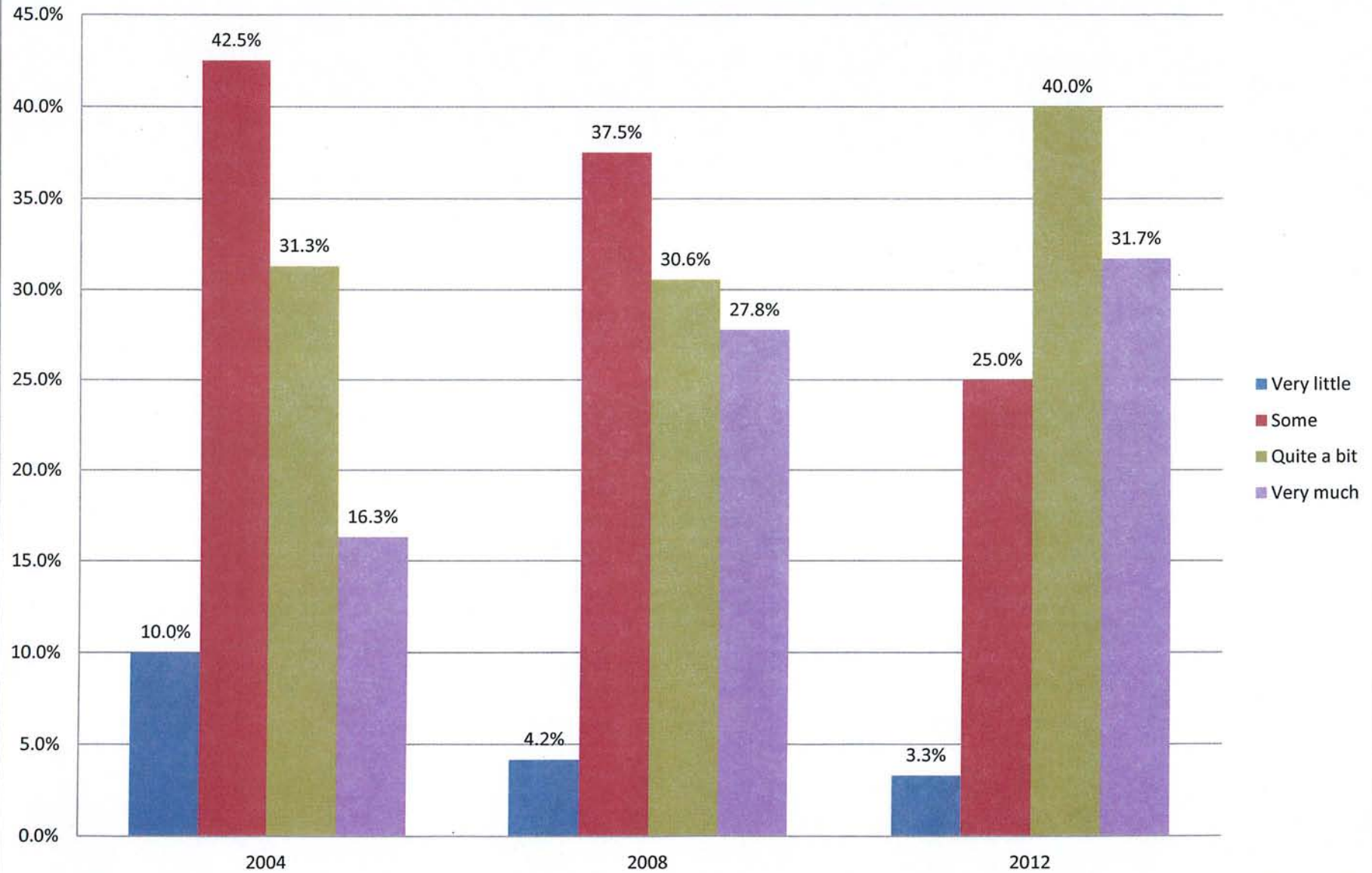


### 3L - To what extent has your experience at law school contributed to your skill in working effectively with others





### 3L - To what extent has your experience at law school contributed to your skill in solving complex real-world problems



### 3L - To what extent has your experience at law school contributed to your skill in solving complex real-world problems

